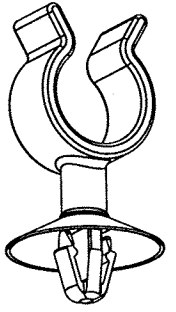
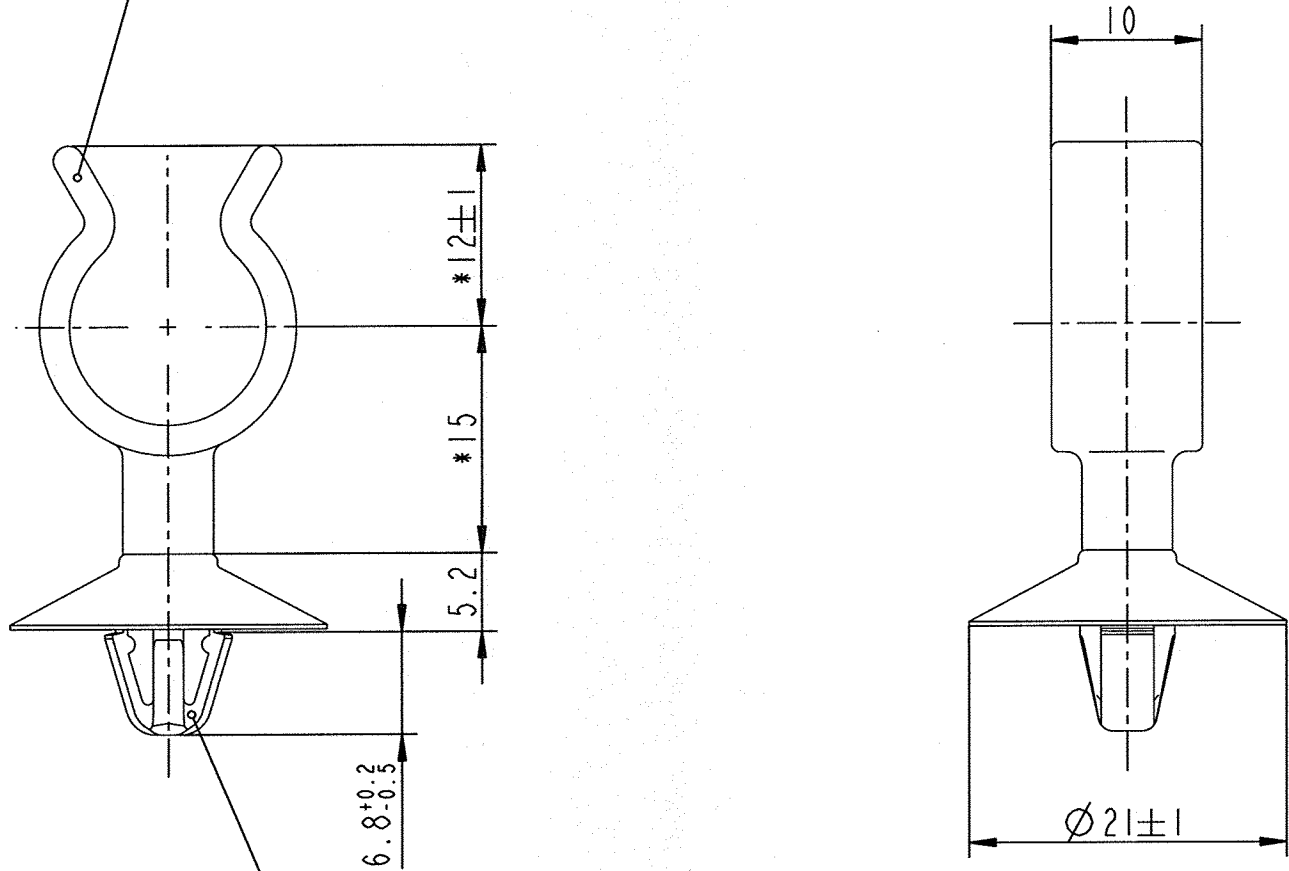


1:1



Teil-Nr./Prt.-No.: 016709 002  
 fuer Rohr- oder Schlauch- $\varnothing$ 13 ...  $\varnothing$ 14  
 applicable for pipe- or hose- $\varnothing$ 13 ...  $\varnothing$ 14  
 Werkstoff / material:  
 POM - C - Standard



Befest. - Loch =  $\varnothing$ 6,5  $\pm$ 0.2  
 Fastening hole  
 Befest. - Dicke = 0.5 ... 3  
 Fastening thickness

Teil-Nr./Prt.-No.: 175 036 000  
 Aufnahmebolzen / connector bolt  
 Werkstoff / material:  
 PA 6 - schlagzaeh / impact strength

|      |                         |                                       |            |      |
|------|-------------------------|---------------------------------------|------------|------|
| -    | -                       | -                                     | -          | -    |
| -    | -                       | -                                     | -          | -    |
| -    | -                       | -                                     | -          | -    |
| -    | -                       | -                                     | -          | -    |
| -    | -                       | -                                     | -          | -    |
| Ca   | -                       | Indexrefom SAP / keine Teileaenderung | 14.02.08   | kl   |
| Ind. | Kommt vor/<br>how often | Beschreibung / Description            | Datum/Date | Name |

Aenderungen / Modifications

Format DIN A3    SPEZIALBEFESTIGUNGSSYSTEME WELTWEIT / ENGINEERED FASTENERS WORLDWIDE

Bei Verstaendnisproblemen beantragen Sie bitte beim Absender die deutsche Fassung vor jeder Anwendung.  
 "CONDITIONS OF USE"  
 This drawing and all information (the "Drawing") disclosed are the exclusive property of A.Raymond. By using this Drawing the Addressee acknowledge and accept that this Drawing (1) is covered by A.Raymond' intellectual property rights or know-how and (2) is provided under the following conditions who represent a Deposit Agreement. This Drawing is for Addressee' internal use only limited to its estimation. Without prior written consent of A.Raymond, no permission or rights for any purpose, is hereby granted, such as, without any limitation, (1) the copy, in part or entirely (2) and/or the presentation, in part or entirely, to any other third party outside the Addressee' company or in the company but with no interest (3) and/or the distribution of the Drawing, in part or entirely, in any medium (4) and/or the creation of any derivative work. In case of breach of these conditions, Addressee shall indemnify A.Raymond from and against all damages (compensatory or consequential), costs, expenses and charges, caused or arising out of or attributable to its willful misconduct, fraud, negligence, infringement of A.Raymond' Intellectual Property rights. If the Addressee does not accept these conditions, please notify A.Raymond' sender immediately.

|                                |                                      |                         |         |                        |       |
|--------------------------------|--------------------------------------|-------------------------|---------|------------------------|-------|
| Dateiname/<br>Filename         | CAD-PE: 081418_C_01                  |                         |         |                        |       |
| Ersatz fuer/<br>Substitute for | 81 418.800 Index 2<br>vom 20.09.2000 | Proj.-Nr./<br>Proj.-No. | 22962-K | RASCH-<br>Code         | BADA- |
|                                |                                      | Vol.(mm <sup>3</sup> )  | -       | Gewicht/<br>Weight (g) | -     |

|                                |                                   |                      |                          |  |
|--------------------------------|-----------------------------------|----------------------|--------------------------|--|
| Schutzrechte/<br>Patent rights | vorbehalten / all rights reserved |                      |                          |  |
| Gepr./<br>App.                 | F.-gepr./<br>Produktion           | Q.-gepr./<br>Quality | S.-gepr./<br>Patent app. |  |

|                  |   |                |            |
|------------------|---|----------------|------------|
| Massstab / Scale | Allgem.Tol. weng/nicht anders angegeben/<br>General tol. unless otherwise specified | Datum/<br>Date | 14.02.2008 |
| 2:1              | $\pm$ 0.5 / $\pm$ 5°  | Gez./<br>Drawn | Klar       |

|                                  |   |                          |   |
|----------------------------------|---|--------------------------|---|
| Oberflaechenbehandlg./<br>Finish | - | Kennzahl/<br>Code number | - |
|----------------------------------|---|--------------------------|---|

|   |   |                             |               |
|---|---|-----------------------------|---------------|
| Werkstoffbehandlg./<br>Material treatment | - | Blechedicke/<br>Mat.Thickn. | DIN EN 10 140 |
|---|---|-----------------------------|---------------|

|                        |                                |           |      |
|------------------------|--------------------------------|-----------|------|
| Werkstoff/<br>Material | siehe Zeichnung<br>see drawing | Mat.-Code | 8800 |
|------------------------|--------------------------------|-----------|------|

Benennung/  
Partname: Aufnahmebolzen/Schlauchhalter drehbar  
 connector bolt / hose clip rotatable

|                       |            |   |
|-----------------------|------------|---|
| Teil-Nr./<br>Part-No. | 081418 000 | C |
|-----------------------|------------|---|

\* Maße sind bei eingedrucktem  
 Pruefstift  $\varnothing$ 13 zu messen  
 dimensions must be measured with  
 preassembled test pin  $\varnothing$ 13

Teilgewicht errechnet : 2.1 g  
 part weight calculated :

|                        |  |                          |      |
|------------------------|--|--------------------------|------|
| 081418 000             | schwarz<br>black                         | SW                       | 7000 |
| Teil-Nr. /<br>Part-No. | Oberflaeche / Farbe /<br>Finish / colour | Kennzahl/<br>Code number |      |
|                        | Ausfuehrung / Execution                  |                          |      |