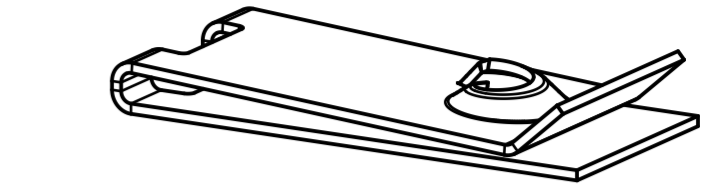
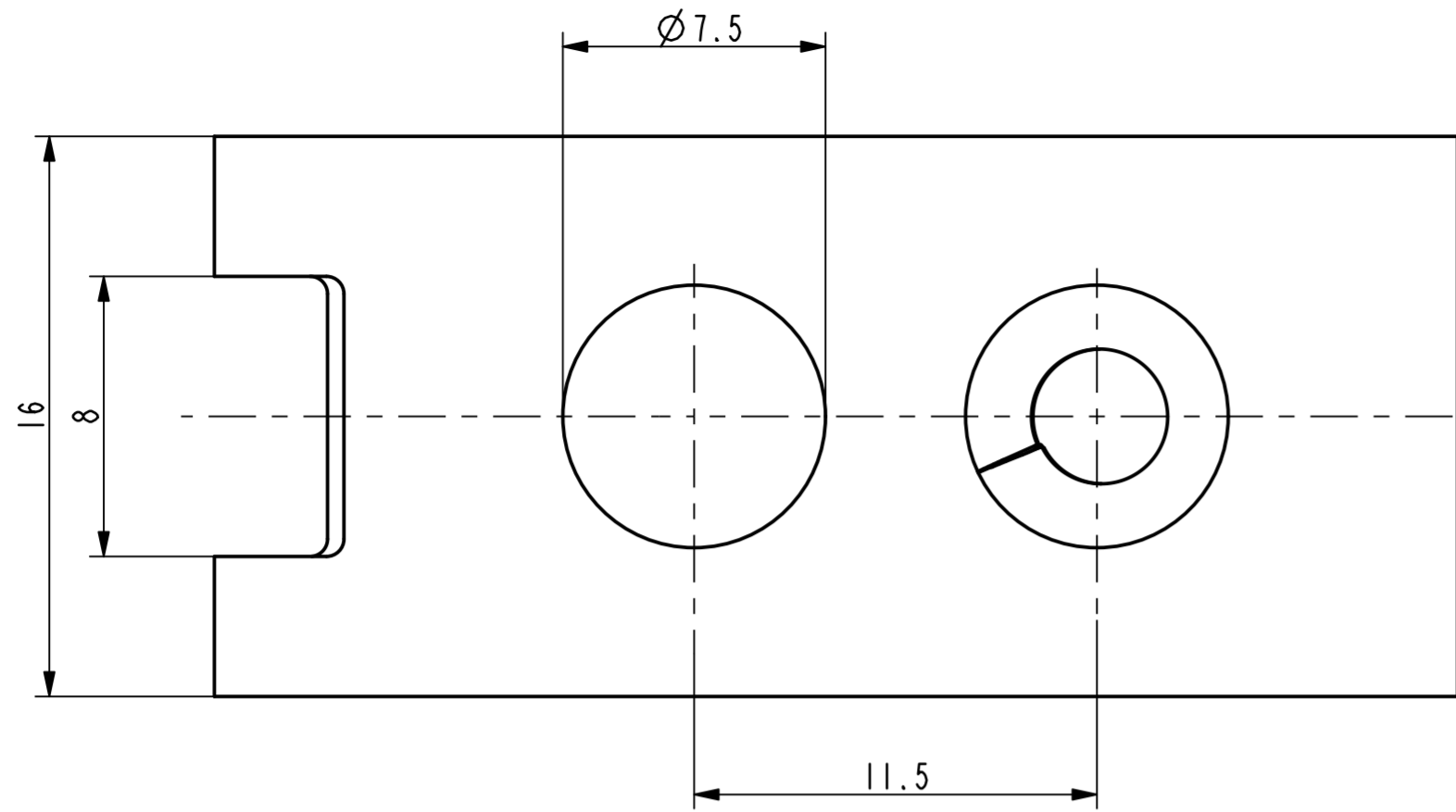
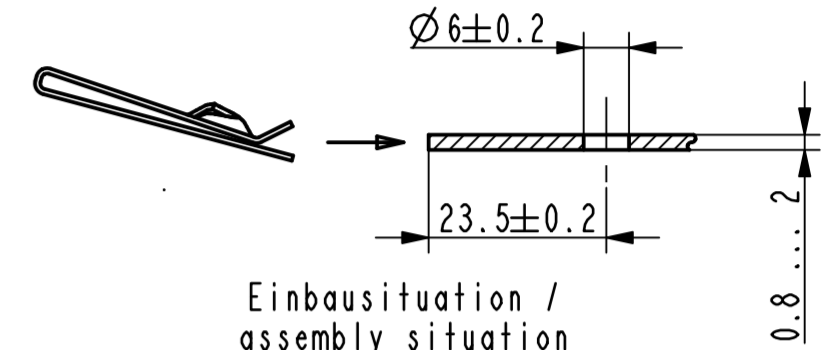


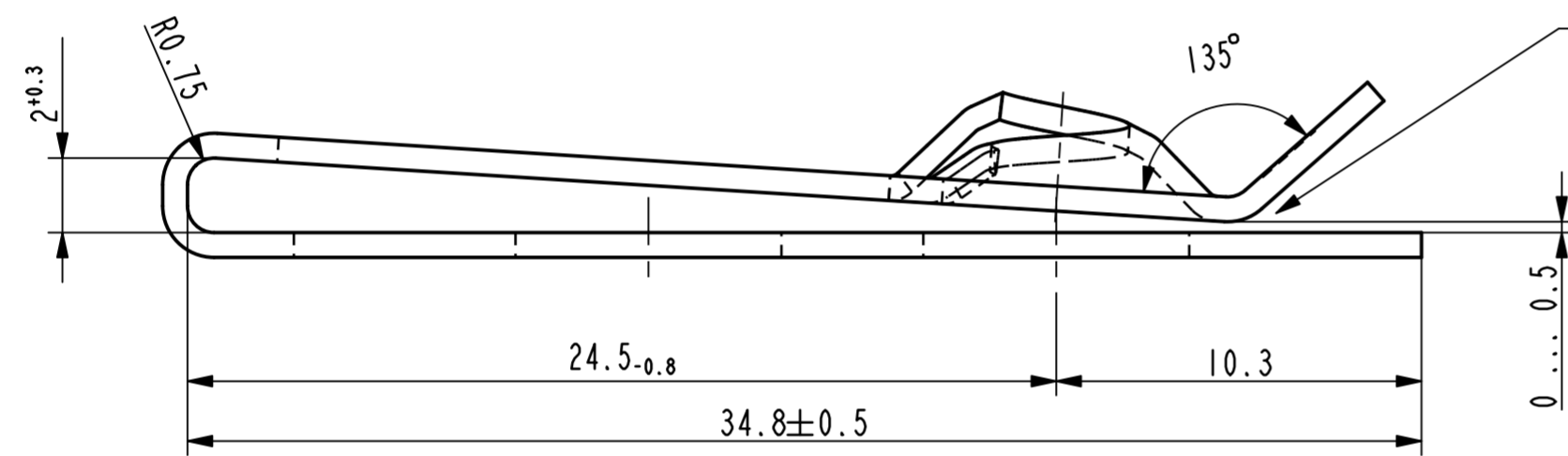
Vor Auslegung einer automatisierten Verarbeitung des Teils sollte Ruecksprache mit Fa. A.Raymond gehalten werden.
Fully automatic processing of the part requires prior consultation with A.Raymond GmbH.



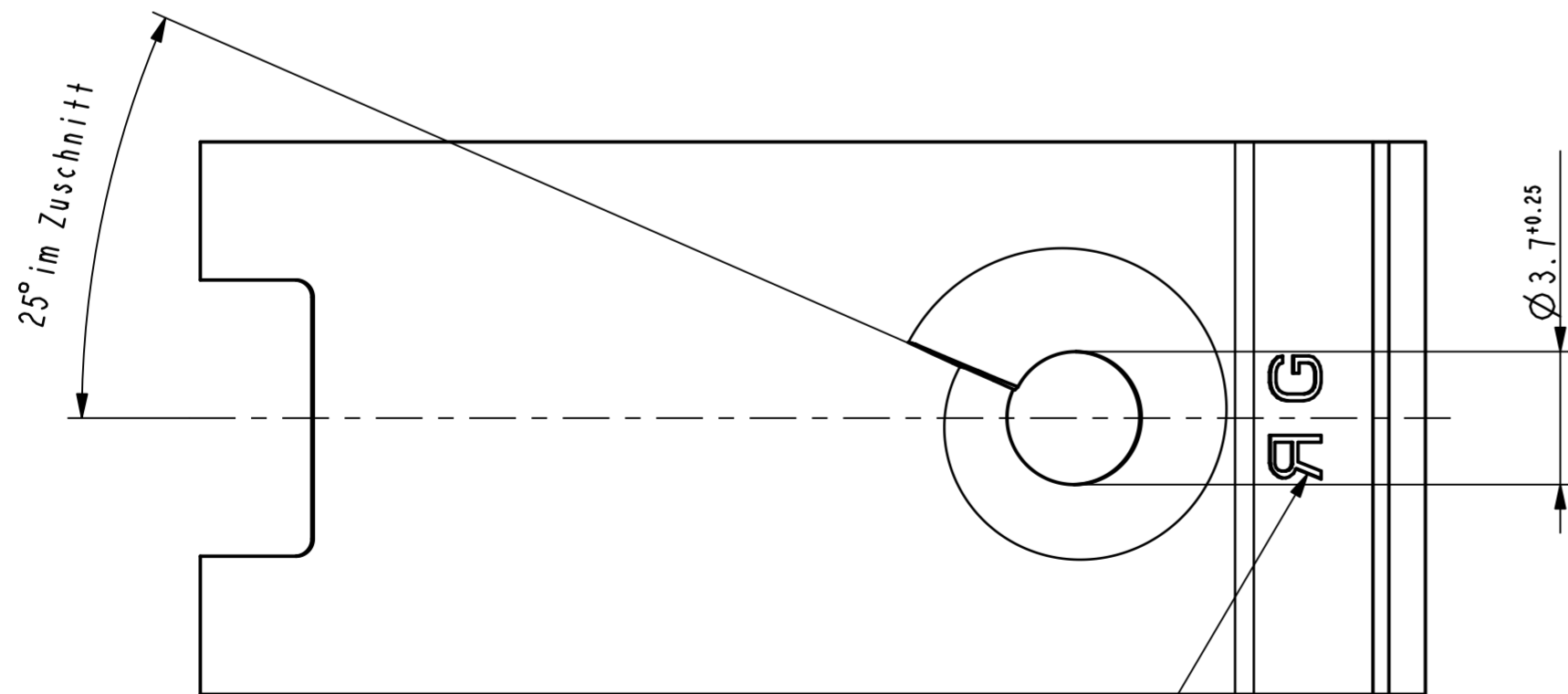
3D-Ansicht /
isometrical view
2:1



Einbausituation /
assembly situation
1:1



Ueberbrueckung der Oeffnung durch metallhaltige
Korrosionsschutzbeschichtung zulaessig /
surface finish bridging permissible



Kennzeichnung zulaessig /
marking permissible

| | | | | |
|------|-----------------|---|---|------|
| Rev. | Anzahl/quantity | Aenderungsbeschreibung / modification description | Datum/date | Name |
| Bc | - | Oberflaechenvariante entfernt (3000) | 21.10.10 | mj |
| | | | | |
| | | | Teichstrasse 57 Germany - 79511 Loerrach Phone +49 (0) 7621 174-0 Fax +49 (0) 7621 174-225 | |

Bei Verstaendnisproblemen beantragen Sie bitte beim Absender die deutsche Fassung vor jeder Anwendung.
"CONDITIONS OF USE"
This drawing and all information (the "Drawing") disclosed are the exclusive property of A.Raymond.
By using this Drawing the Addressee acknowledges and accepts that this Drawing (1) is covered by A.Raymond' intellectual property rights or know-how and (2) is provided under the following conditions who represent a Deposit Agreement.
This Drawing is for Addressee' internal use only limited to its estimation.
Without prior written consent of A.Raymond, no permission or rights for any purpose, is hereby granted, such as, without any limitation, (1) the copy, in part or entirely, (2) and/or the presentation, in part or entirely, to any other third party outside the Addressee' company or in the company but with no interest (3) and/or the distribution of the Drawing, in part or entirely, in any medium (4) and/or the creation of any derivative work.
In case of breach of these conditions, Addressee shall indemnify A.Raymond from and against all damages (compensatory or consequential), costs, expenses and charges, caused or arising out of or attributable to its willful misconduct, fraud, negligence, infringement of A.Raymond' intellectual property rights. If the Addressee does not accept these conditions, please notify A.Raymond' sender immediately.

| | | | | |
|--------------------------------|---|------------------------|-------------------------------|------------|
| Schutzrechte/ patent rights | vorbehalten / all rights reserved | | Resch Code/ classification | AAAAE |
| Ersatz fuer/ substitute for | 014226.c.01/Bb/21.12.2006 | Entw.Ref./ dev.ref. | Projekt-Nr./ project no. | 42553-EM |
| Masstab/ scale | 5:1 | Format | A2 | |
| Projektion / projection | ALL DIMENSIONS ARE IN MILLIMETERS | | Datum/ date | 21.10.2010 |
| | Blechklaesse/ met. thickness DIN EN 10140 | 0.70 | Erstellt von/ prepared by | M. Junge |
| | Freigegeben/ approved | 20101021091842 | Volumen/ volume (mm³) | 701.1 |
| | | | Gericht/ weight (g) | 5.6 |

Oberfl./
finish
metallhaltige Korrosionsschutzbeschichtung, Farbe Silber
metallic corrosion protection coated, colour silver

Werkstoffbehandl./
material treatment
zwischenstufenverguetet / austempered
375 ... 475 HV 5

Werkstoff/
material
C67S DIN EN 10132-4

Bezeichnung/
title
Blechmutter
fuer Gewinde EN ISO 1478-ST4.8
sheet metal nut
for thread EN ISO 1478-ST4.8

Teil-Nr./
part no.
014226-0-02

Drawing type
Customer

| | | |
|------------------------|---|------------------------------|
| 014226-0-03 | metallhaltige Korrosionsschutzbeschichtung, Farbe Silber, GZ metallic corrosion protection coated, colour silver, lubricated | 4050 |
| Teil-Nr. / part no. | Oberflaeche / Farbe / finish / colour | Oberfl. Code/ finish code |
| Ausfuhrung / Execution | | |



CAD system & version ProE WF3
Dateiname / filename 014226-0C00