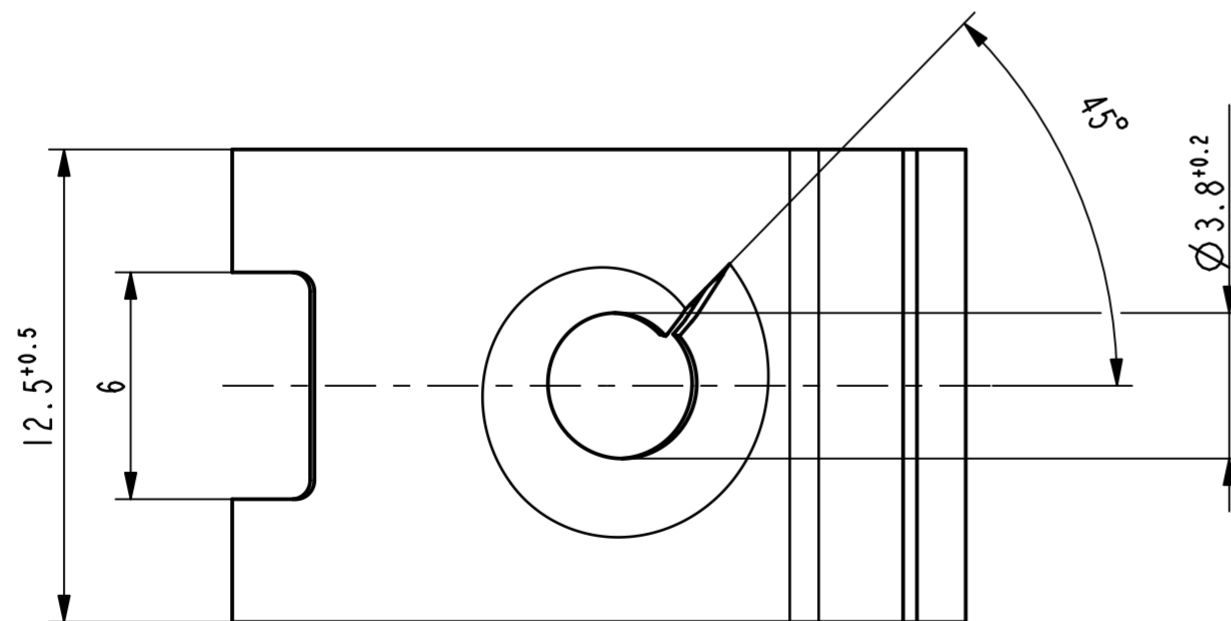
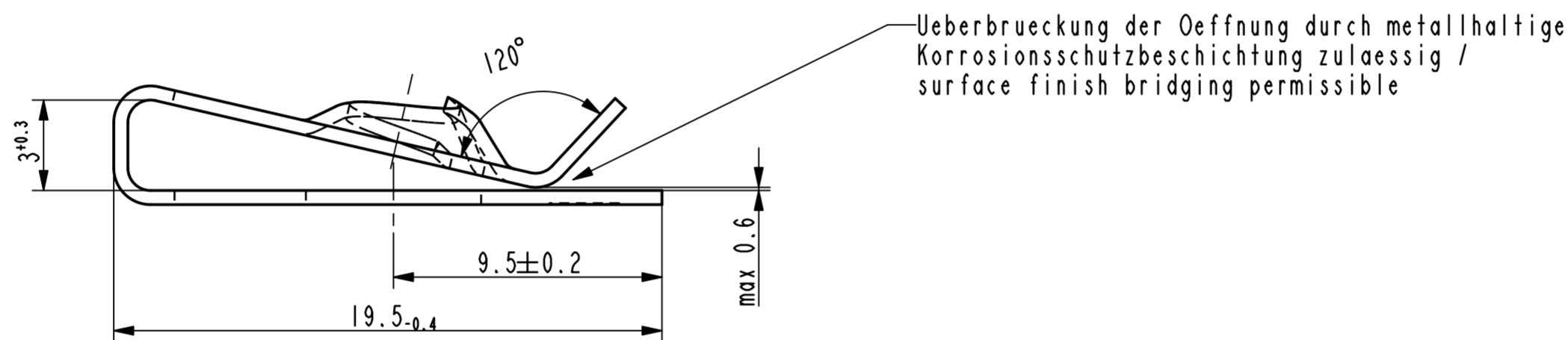
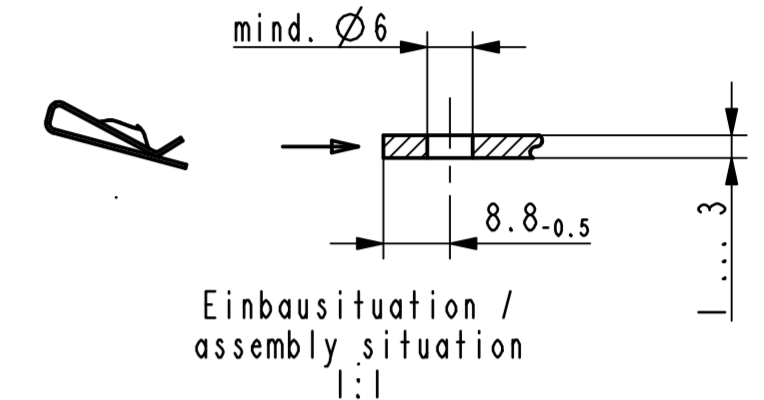
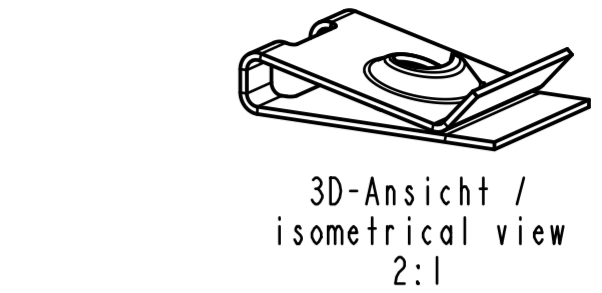
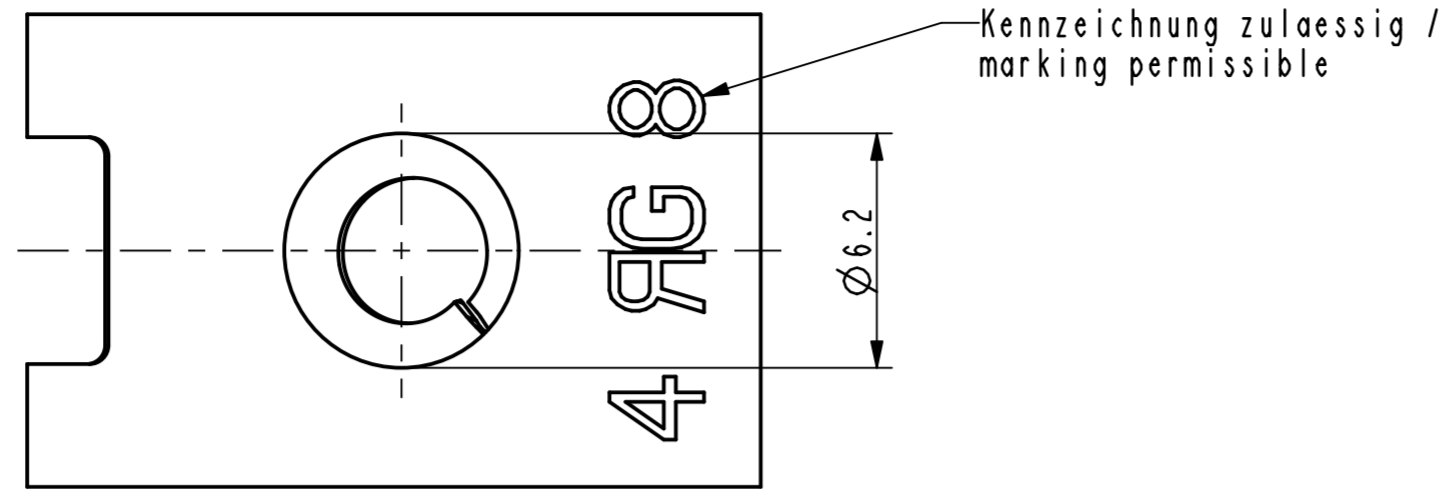


Vor Auslegung einer automatisierten Verarbeitung des Teils sollte Rücksprache mit Fa. A.Raymond gehalten werden.
Fully automatic processing of the part requires prior consultation with A.Raymond GmbH.



-	-	-	-	-
-	-	-	-	-
-	-	-	-	-
-	-	-	-	-
-	-	-	-	-
-	-	-	-	-
-	-	-	-	-
-	-	-	-	-
-	-	-	-	-
-	-	-	-	-
Aa	-	Oberflaechenvariante entfernt (3000, 3400, 3600)	19.10.10	mj
Rev.	Anzahl/quantity	Aenderungsbeschreibung / modification description	Datum/date	Name
		Teichstrasse 57 Germany - 79511 Loerrach Phone +49 (0) 7621 174-0 Fax +49 (0) 7621 174-225		

Bei Verständnisproblemen beantragen Sie bitte beim Absender die deutsche Fassung vor jeder Anwendung.
"CONDITIONS OF USE"
This drawing and all information (the "Drawing") disclosed are the exclusive property of A.Raymond.
By using this Drawing the Addressee acknowledges and accepts that this Drawing (1) is covered by A.Raymond' intellectual property rights or know-how and (2) is provided under the following conditions who represent a Deposit Agreement.
This Drawing is for Addressee' internal use only limited to its estimation.
Without prior written consent of A.Raymond, no permission or rights for any purpose, is hereby granted, such as, without any limitation, (1) the copy, in part or entirely, (2) and/or the presentation, in part or entirely, to any other third party outside the Addressee' company or in the company but with no interest (3) and/or the distribution of the Drawing, in part or entirely, in any medium (4) and/or the creation of any derivative work.
In case of breach of these conditions, Addressee shall indemnify A.Raymond from and against all damages (compensatory or consequential), costs, expenses and charges, caused or arising out of or attributable to its willful misconduct, fraud, negligence, infringement of A.Raymond' intellectual property rights. If the Addressee does not accept these conditions, please notify A.Raymond' sender immediately.

Schutzrechte/patent rights	vorbehalten / all rights reserved		Resch Code/classification	AAAAE	
Ersatz fuer/substitute for	013832.c.01/A/12.10.2004	Entw.Ref./dev.ref.	Projekt-Nr./project no.		
Masstab/scale	5:1	Format	A2		
Projektion / projection		Allgemeintoleranz/general tolerance	$\pm 0.3 / \pm 5^\circ$	Datum/date	19.10.2010
Blechkodiermet.-Dicke/DIN EN 10140	0.50	Erstellt von/prepared by	M. Junge	Freigegeben/approved	20101019132120
Oberfl./finish	metallhaltige Korrosionsschutzbeschichtung, Farbe silber metallic corrosion protection coated, colour silver			Oberfl. Code/finish code	5410
Werkstoffbehand./material treatment	zwischenstufenverguetet / austempered 435 ... 535 HV 5				
Werkstoff/material	C67S DIN EN 10132-4			Met. code	1000

Bezeichnung/title		Blechmutter fuer Gewinde EN ISO 1478 - ST4.8 sheet metal nut for thread EN ISO 1478 - ST4.8	
Teil-Nr./part no.	013832-0-04	Drawing type	Customer
Kundenteile-Nr. / customer part no.	-	Blatt / sheet	1 / 1
CAD system & version	ProE WF3	Dateiname / filename	013832-0C00

013832-0-06	metallhaltige Korrosionsschutzbeschichtung, Farbe silber metallic corrosion protection coated, colour silver	5412
013832-0-05	metallhaltige Korrosionsschutzbeschichtung, Farbe silber metallic corrosion protection coated, colour silver	5440
Teil-Nr. / part no.	Oberflaechen / Farbe / finish / colour	Oberfl. Code / finish code
Ausfuhrung / Execution		

