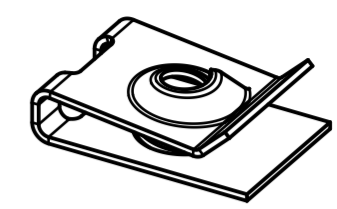
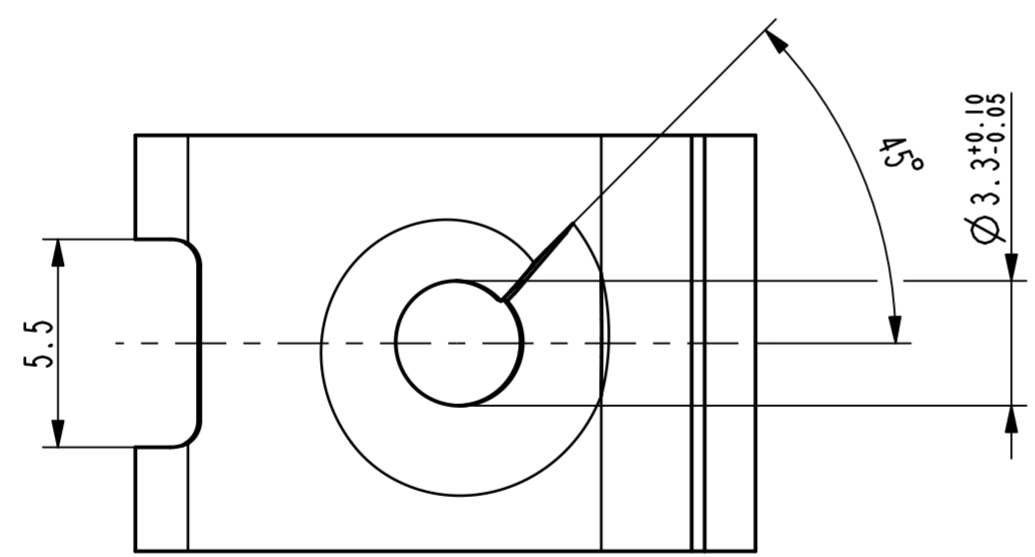
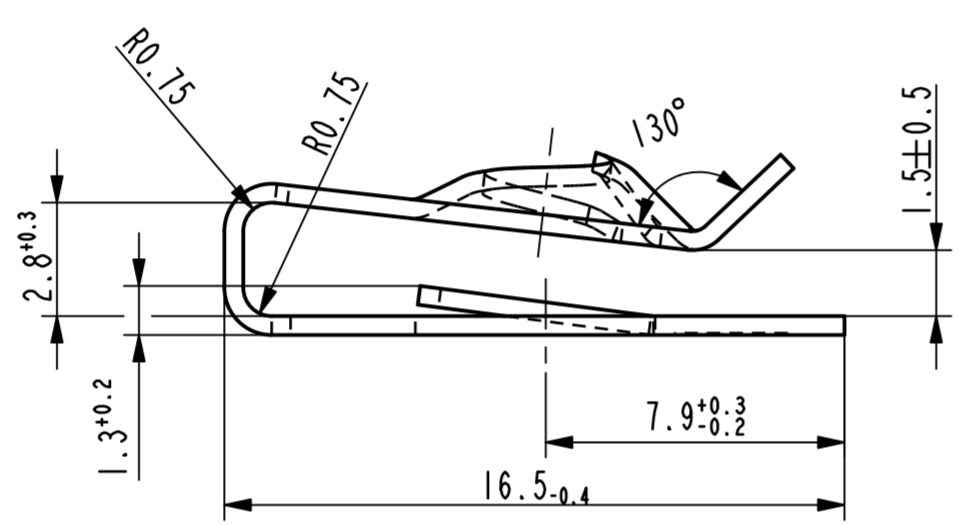
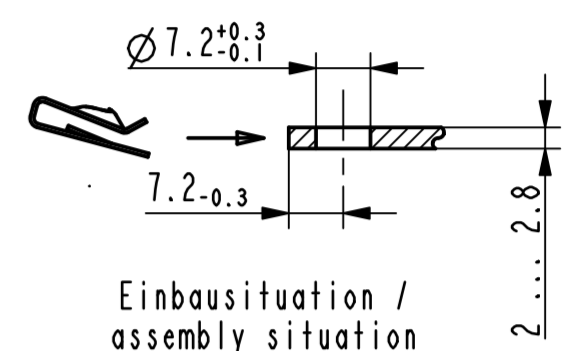


Kennzeichnung zulässig / marking permissible



Isometrische Ansicht / isometric view 2:1



Einbausituation / assembly situation 1:1

Vor Auslegung einer automatisierten Verarbeitung des Teils sollte Rücksprache mit Fa. A.Raymond gehalten werden. Fully automatic processing of the part requires prior consultation with A.Raymond GmbH.

-	-	-	-	-
-	-	-	-	-
-	-	-	-	-
-	-	-	-	-
-	-	-	-	-
-	-	-	-	-
-	-	-	-	-
Bc	ix	Oberflächenvariante hinzugefügt	15.08.11	Ru
Bb	-	Oberflächenvariante entfernt (3x)	05.07.10	mj
Rev.	Anzahl/quantity	Änderungsbeschreibung / modification description	Datum/date	Name

**ARaymond**  
 A RAYMOND GmbH & Co.KG  
 Teichstrasse 57  
 Germany - 79511 Loerrach  
 Phone +49 (0) 7621 174-0  
 Fax +49 (0) 7621 174-225

Bei Verständnisproblemen beantragen Sie bitte beim Absender die deutsche Fassung vor jeder Anwendung.  
**"CONDITIONS OF USE"**  
 This drawing and all information (the "Drawing") disclosed are the exclusive property of A.Raymond. By using this Drawing the Addressee acknowledges and accepts that this Drawing (1) is covered by A.Raymond' intellectual property rights or know-how and (2) is provided under the following conditions who represent a Deposit Agreement. This Drawing is for Addressee' internal use only limited to its estimation. Without prior written consent of A.Raymond, no permission or rights for any purpose, is hereby granted, such as, without any limitation, (3) the copy, in part or entirely, (4) and/or the distribution of the Drawing, in part or entirely, in any medium (5) and/or the creation of any derivative work. In case of breach of these conditions, Addressee shall indemnify A.Raymond from and against all damages (compensatory or consequential), costs, expenses and charges, caused or arising out of or attributable to its willful misconduct, fraud, negligence, infringement of A.Raymond' intellectual property rights. If the Addressee does not accept these conditions, please notify A.Raymond' sender immediately.

Schutzrechte/patent rights	vorbehalten / all rights reserved		Resch Code/classification	AABAD
Ersatz fuer/substitute for	012433.c.01/Ba/29.05.2007	Entw.Ref./dev.ref.	Projekt-Nr./project no.	
Masstab/scale	5:1	Format	A2	
Projektion / projection	ALL DIMENSIONS ARE IN MILLIMETERS	Allgemeintoleranz/general tolerance	±0.3 / ±5°	
Datum/date	05.07.2010	Erstellt von/prepared by	M. Junge	
Blechkörper met. thickness DIN EN 10140	0.50	Freigegeben/approved	20110815102913	
Volumen/volume (mm³)	158.6	Gericht/weight (g)	1.3	
Oberfl./finish	phosphatiert / impraegniert phosphated / oiled			Oberfl. Code/finish code 5100
Werkstoffbehandl./material treatment	zwischenstufenverguetet / austempered 435 ... 535 HV 5			
Werkstoff/material	C67S DIN EN 10132-4			Mat. code 1000

012433-0-09	metallhaltige Korrosionsschutzbeschichtung, Farbe silber, GZ metallic corrosion protection coated, colour silver, lubricated	4001
012433-0-08	metallhaltige Korrosionsschutzbeschichtung, Farbe schwarz metallic corrosion protection coated, colour black	5451
012433-0-07	verzinkt / passiviert farblos zinc plated / passivated colourless	3250
012433-0-05	metallhaltige Korrosionsschutzbeschichtung, Farbe schwarz, GZ metallic corrosion protection coated, colour black, lubricated	5453
012433-0-04	metallhaltige Korrosionsschutzbeschichtung, Farbe silber metallic corrosion protection coated, colour silver	5410

Bezeichnung/  
 title  
**Blechmutter**  
 fuer Gewinde EN ISO 1478 - ST4.2  
 sheet metal nut  
 for thread EN ISO 1478 - ST4.2

Teil-Nr./  
 part no. **012433-0-03**

Drawing type  
**Customer**

Teil-Nr. / part no.	Oberfläche / Farbe / finish / colour	Oberfl. Code/finish code	Kundenteile-Nr. / customer part no.	-	Blatt / sheet	1 / 1	
Ausführung / Execution							
CAD system & version			ProE WF3	Dateiname / filename			012433-0C00