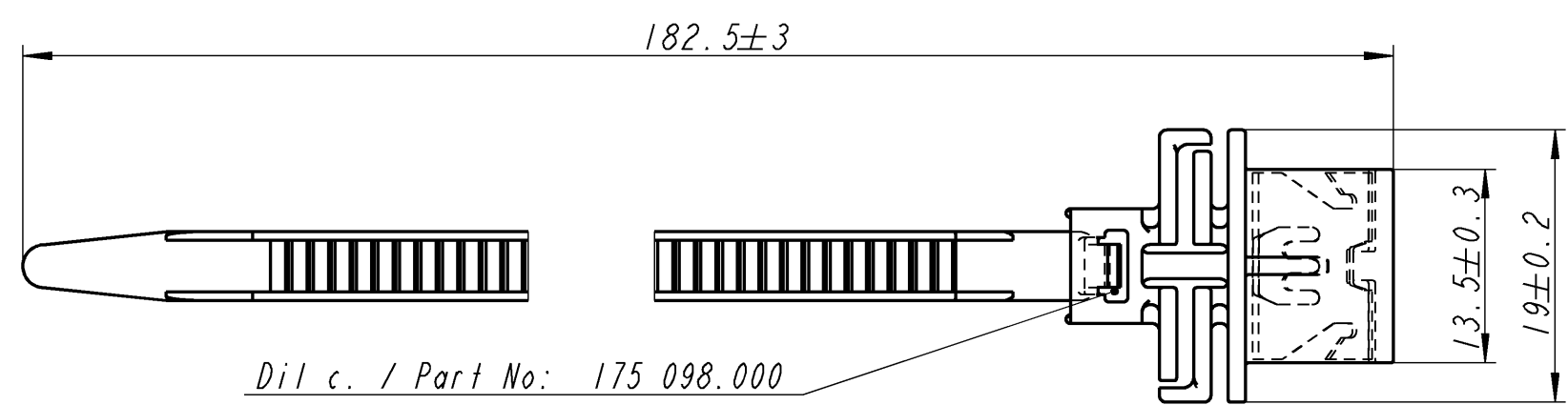


1:1

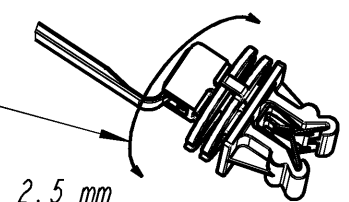


Díl c. / Part No: 175 098.000

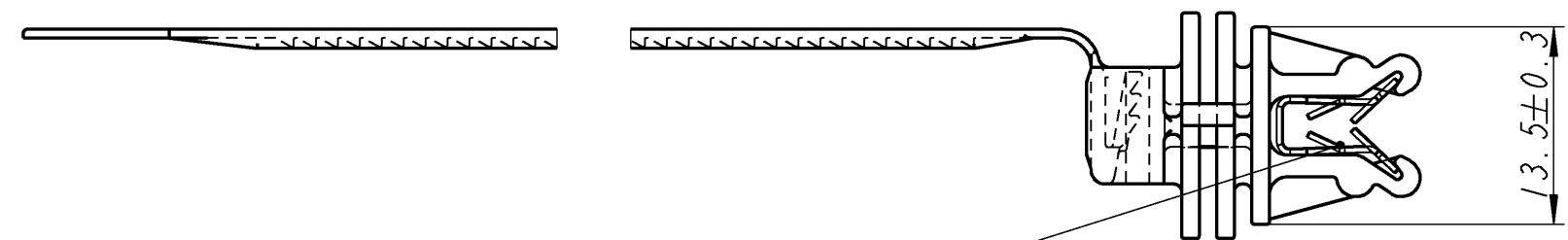
použitelne pro svazky : od 1,5 do 40 mm  
 applicable for bundles : from 1,5 to 40 mm

Material :  
 PA 66 houzevnatý za sucha , tepl. odolný  
 PA 66 dry impact strength, heat stabilized  
 Barva / Colour černá / black

Rotatable  $\pm 170^\circ$



Upinací tloušťka : od 0,7 do 2,5 mm  
 Fastening thickness : from 0,7 to 2,5 mm





Díl c. / Part No: 131 421.000

Material : Ck 67 S DIN EN 10 132-4  
 Tep. zpracování / heat treatment  
 mezistupňově ziháno / multilevel annealed 42 ... 46 HRC  
 Povrch. zpracování / finish surface  
 Deltatone 2 vrstvy / 2 layers

>400 ≤ 1000	±2
>120 ≤ 400	±1,5
> 30 ≤ 120	±1
> 6 ≤ 30	±0,5
≤ 6	±0,25
Uhel / Angle	±3°

Všeobecné tolerance pro neolterované jmenovité rozměry  
 General tolerances for nominal dimensions without specified tolerance.

190 042.000	175 098.000	2000 PA 66	7000 černá/black	131 421.000	---	---
C. dílu/Part-No.	Kod mat. Material	K. bar./Colour c. Barva/Colour	C. dílu/Part-No.	Kod mat. Material	K. bar./Colour c. Barva/Colour	
Cislo dílu/Part-No. Popis pozice / Bill of material						

A		nový rameček / new drawing fram	14.03.07	Sd
		nové číslování SAP/new SAP numbering		
Ind.	kolikrát/ how often	Popis / Description	Datum / Date	Nome
Změny / Modifications				
drawing name: 190042_000		model name: 190042_900	Format: DIN A3	
				
SPECIALNI UPINACI SYSTEMY				
This drawing and all information (the "Drawing") disclosed are the exclusive property of A. Raymond. By using this Drawing the Addressee acknowledges and accepts that this Drawing (1) is covered by A. Raymond' intellectual property rights or know-how and (2) is provided under the following conditions who represent a Deposit Agreement. This Drawing is for Addressee' internal use only limited to its estimation. Without prior written consent of A. Raymond, no permission or rights for any purpose, is hereby granted, such as, without any limitation, (1) the copy, in part or entirely (2) and/or the presentation, in part or entirely, to any other third party outside the Addressee' company or in the company but with no interest (3) and/or the distribution of the Drawing, in part or entirely, in any medium (4) and/or the creation of any derivative work. In case of breach of these conditions, Addressee shall indemnify A. Raymond from and against all damages (compensatory or consequential), costs, expenses and charges, caused or arising out of or attributable to its willful misconduct, fraud, negligence, infringement of A. Raymond' intellectual Property rights. If the Addressee does not accept these conditions, please notify A. Raymond' sender immediately. Jestliže máte problém s porušením tohoto textu, pak před zahájením práce na tomto projektu kontaktujte odesílatele výkresu za účelem získání vám stromatelného překladu.			Datum/ Date 24.04.2001	
			Kreslil/ Drawn Krsnak	
			C.-prezk./App. BE0599D7E3413A3D	
			F.-prezk./App.	
			Q.-prezk./App.	
Patentová práva/ Patent rights vyhrazena / all rights reserved			S.-prezk./ Patent app.	
Měřítko/Scale 2:1		Všeobecně jinak neurčene tolerance/ General tol. unless otherwise specified viz tabulka / see table		
Uprava materiálu/ Material treatment				Hmot. Weight [g]
Material viz výkres see drawing				
Název dílu/ Partname		Otocná páska se sponou Rotatable strap with clip		
Cis. dílu zakazníka/ Customer part No.				
Cislo dílu/ Part-No. 190 042.000				C