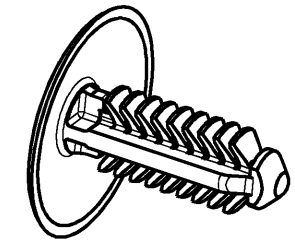


Upinaci otvor : $\varnothing 5 \dots \varnothing 5,4$ mm
 Fastening hole : $\varnothing 5 \dots \varnothing 5,4$ mm
 Pruchozi otvor : $\varnothing 7$ mm
 Through hole : $\varnothing 7$ mm

Upevnovaci tloustka : od 0,8 do 2,0 mm
 Fastening thickness : from 0,8 to 2,0 mm
 Celkova tloustka : od 1,6 do 10,3 mm
 Total thickness : from 1,6 to 10,3 mm

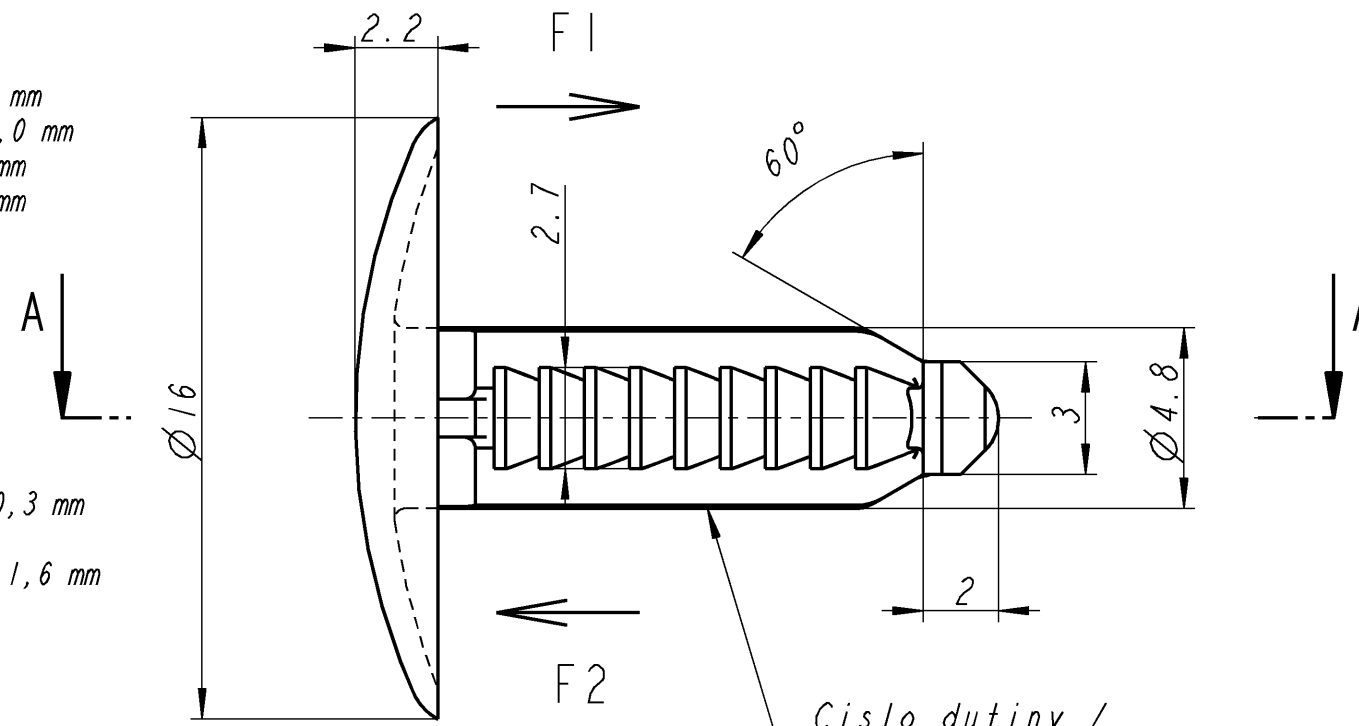
M 2:1



(A)

F1 - montazni sila do plechu tl. 10,3 mm
 a $\varnothing 5$ mm : MAX 80 N
 F2 - demontazni sila z plechu tl. 1,6 mm
 a $\varnothing 5,4$ mm : MIN 75 N

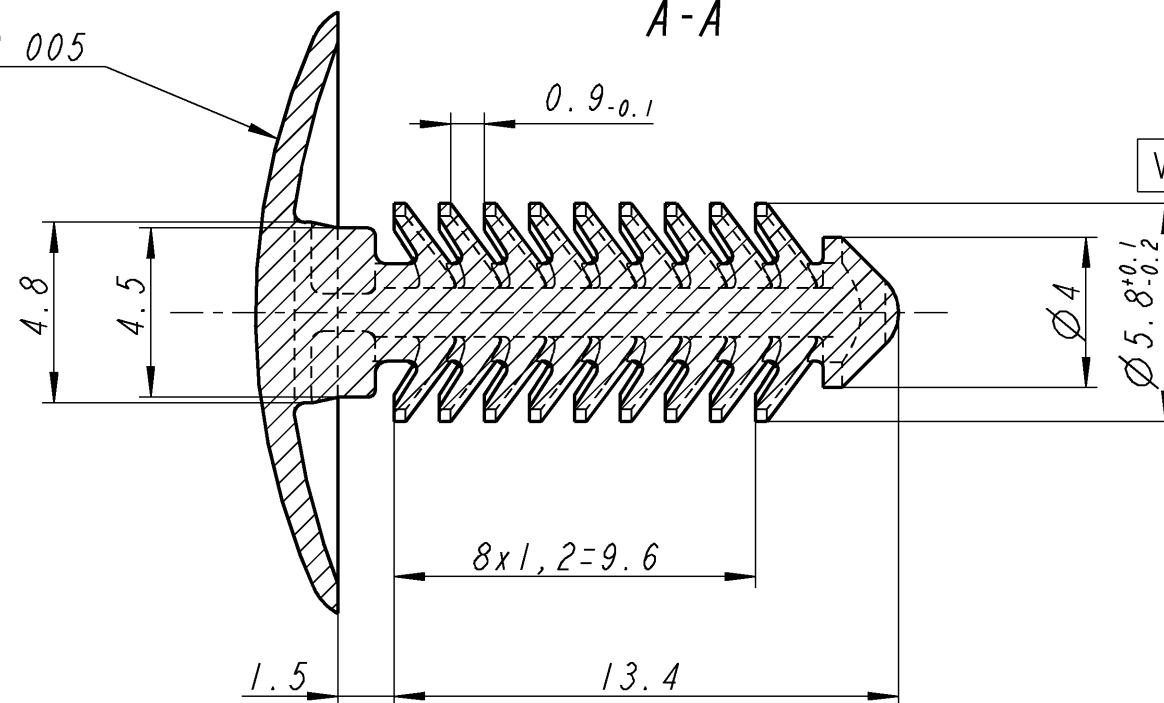
F1 - push in force for steel plate 10,3 mm thickness
 and hole diameter $\varnothing 5$ mm : MAX 80 N
 F2 - pull out force for steel plate 1,6 mm thickness
 and hole diameter $\varnothing 5,4$ mm : MIN 75 N



Cislo dutiny /
Cavity number

DEZEN GR 005

A-A



> 400 ≤ 1000	±2
> 120 ≤ 400	±1,5
> 30 ≤ 120	±1
> 6 ≤ 30	±0,3
≤ 6	±0,2
Uhel/Angle	±3°

Standards:
TSM 0500 G
TSZ 0001 G



(B)

201 012.002	5555	0000	prirodni/natural
201 012.001	5555	1044	modra / blue
201 012.000	5555	7000	cerna / black
Cislo dilu/Part-No.	Kod mat./Mat. code	Kod barvy/Colour code	Barva / Colour

B		add new colour NZ 29/2010	02.03.10	Kr
A		add push and pull forces NZ 19/2006/VYV nove cislovani SAP, nový ramecek new SAP numbering, new drawing frame	11.08.06	Kr
Ind.	kolikrat/ how often	Popis / Description	Datum / Date	Nome
Zmeny / Modifications				
drawing name: 201012_000		model: 201012	Format: DIN A3	
SPECIALNI UPINACI SYSTEMY				
This drawing and all information (the "Drawing") disclosed are the exclusive property of A-Raymond. By using this Drawing the Addressee acknowledges and accepts that this Drawing (1) is covered by A-Raymond's intellectual property rights or know-how and (2) is provided under the following conditions who represent a Deposit Agreement. This Drawing is for Addressee's internal use only limited to its estimation. Without prior written consent of A-Raymond, no permission or rights for any purpose, is hereby granted, such as, without any limitation, (1) the copy, in part or entirely (2) and/or the presentation, in part or entirely, to any other third party outside the Addressee's company or in the company but with no interest (3) and/or the distribution of the Drawing, in part or entirely, in any medium (4) and/or the creation of any derivative work. In case of breach of these conditions, Addressee shall indemnify A-Raymond from and against all damages (compensatory or consequential), costs, expenses and charges, caused or arising out of or attributable to its willful misconduct, fraud, negligence, infringement of A-Raymond's Intellectual Property rights. If the Addressee does not accept these conditions, please notify A-Raymond's sender immediately. Jestliže máte problém s porozumením tohoto textu, pak před zahájením práce na tomto projektu kontaktujte odesílatele výkresu za účelem získání vám stromitelného překladu.		Datum/ Date	11.08.2006	
		Kreslil/ Drawn	Krsnak	
		C.-prezk./App.	OABE1833611F8616	
		F.-prezk./App.		
		Q.-prezk./App.		
Patentova prava/ Patent rights		vyhrazena / all rights reserved	S.-prezk./ Patent app.	
Meritka/Scale	Vseobecne jinak neurcena tolerance/ General tol. unless otherwise specified		Nahrada za/ Substitute for	
5:1	viz tabulka / see table		201 012.555	
Uprava materialu/ Material treatment			Hmot. Weight [g]	
Material		POM		
Nazev dilu/ Partname		Clip		
Cis.dilu zakaznika/ Customer part No.		8 103 411		
Cislo dilu/ Part-No.		201 012.000		C

(D)

...dulezity znak / important characteristic

(V)

...vyznamny znak / significant characteristic