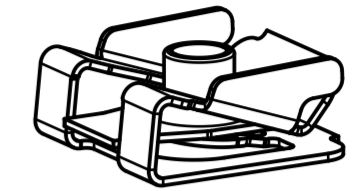
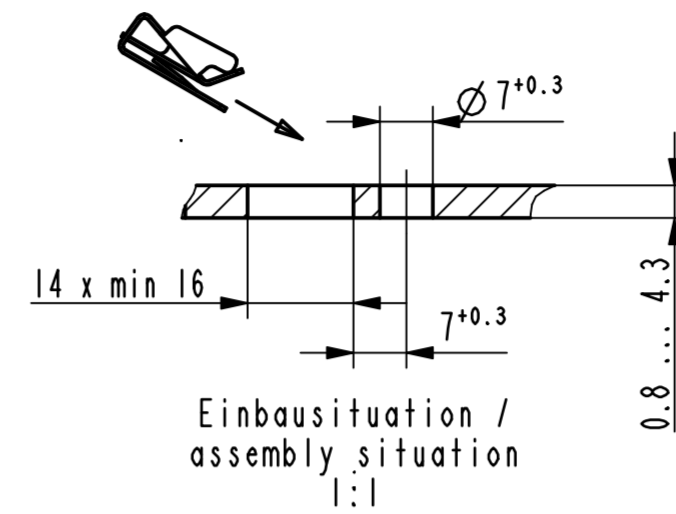
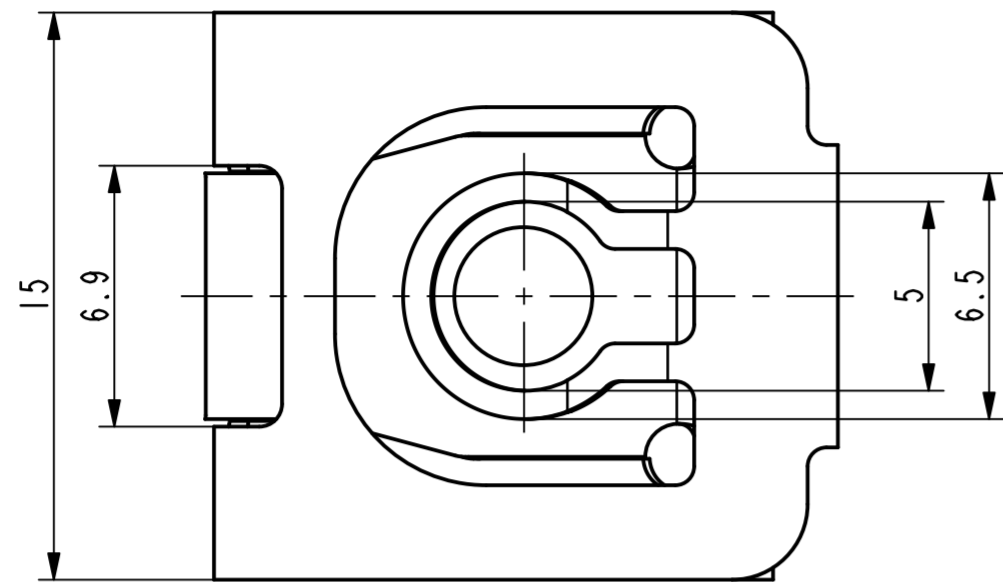
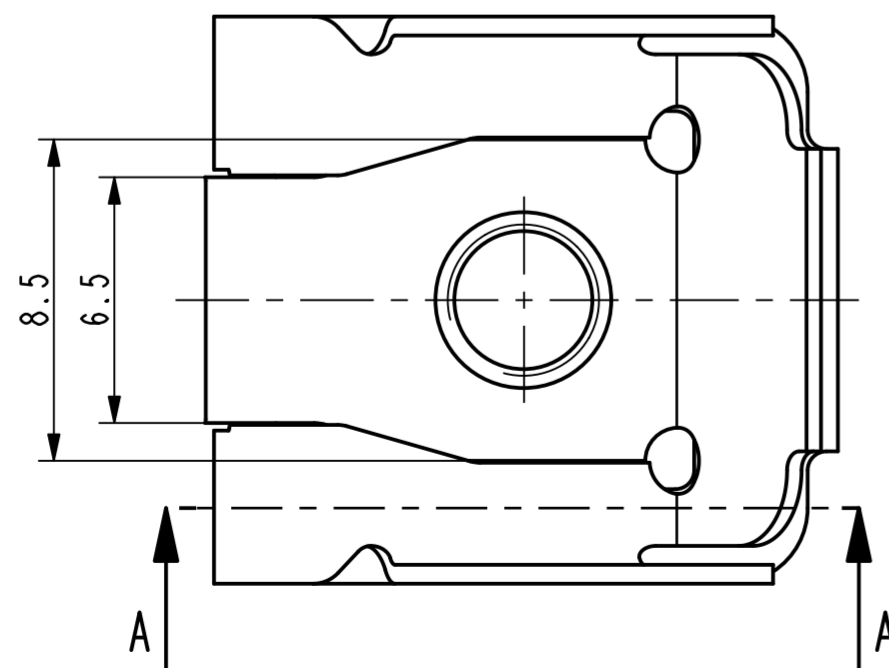
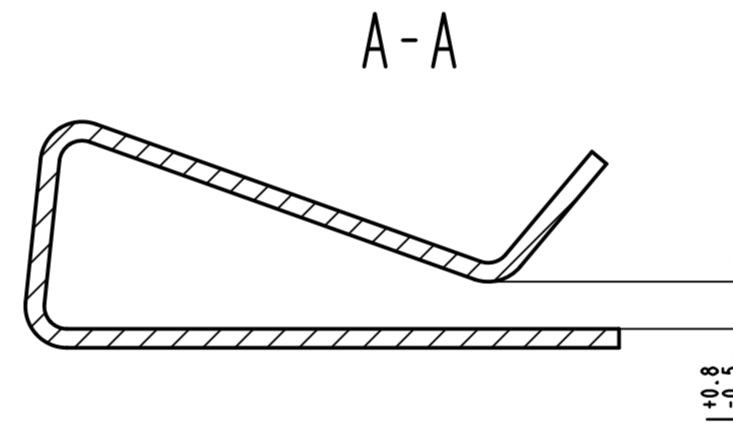
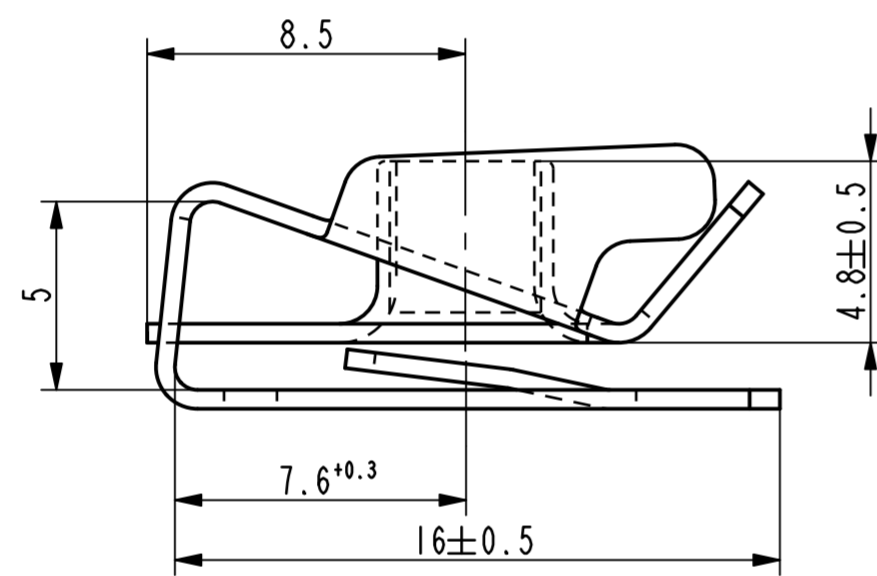


Gewindedurchzug kann nur mit lehrenhaltiger M4 Schraube geprüeft werden / the thread strength can only be tested with a calibrated M4 screw gauge

Vor Auslegung einer automatisierten Verarbeitung des Teils sollte Ruecksprache mit Fa. ARaymond gehalten werden. Fully automatic processing of the part requires prior consultation with ARaymond.



Isometrische Ansicht / isometric view 2:1



-	-	-	-	-	-
-	-	-	-	-	-
-	-	-	-	-	-
-	-	-	-	-	-
-	-	-	-	-	-
-	-	-	-	-	-
-	-	-	-	-	-
-	-	-	-	-	-
Aa	1x	Zeichnung ueberarbeitet nach AR-Gruppenstandard, Teil unveraendert	13.05.13	mj	
Rev.	Anzahl/quality	Aenderungsbeschreibung / modification description	Datum/date	Name	
		ARaymond A RAYMOND GmbH & Co.KG	Teichstrasse 57 Germany - 79511 Loerrach Phone +49 (0) 7621 174-0 Fax +49 (0) 7621 174-225		
Bei Verstaendnisproblemen beantragen Sie bitte beim Absender die deutsche Fassung vor jeder Anwendung. "CONDITIONS OF USE" This drawing and all information (the "Drawing") disclosed are the exclusive property of ARaymond. By using this Drawing the Addressee acknowledges and accepts that this Drawing (1) is covered by ARaymond' Intellectual property rights or know-how and (2) is provided under the following conditions who represent a Deposit Agreement. This Drawing is for Addressee' Internal use only limited to its estimation. Without prior written consent of ARaymond, no permission or rights for any purpose, is hereby granted, such as, without any limitation, (1) the copy, in part or entirely, (2) and/or the presentation, in part or entirely, to any other third party outside the Addressee' company or in the company but with no interest (3) and/or the distribution of the Drawing, in part or entirely, in any medium (4) and/or the creation of any derivative work. In case of breach of these conditions, Addressee shall indemnify ARaymond from and against all damages (compensatory or consequential), costs, expenses and charges, caused or arising out of or attributable to its willful misconduct, fraud, negligence, infringement of ARaymond' Intellectual property rights. If the Addressee does not accept these conditions, please notify ARaymond' sender immediately.					
Intellectual property rights vorbehalten / all rights reserved		Classification code		AABCA	
Ersatz fuer/ substitute for 015463.c.01/A/02.11.2004		Entw.Ref./ dev.ref.		Projekt-Nr./ project no. 6216	
Maassstab/ scale 5:1		Format A2		Allgemeintoleranz/ general tolerance ±0.3	
Datum/ date 13.05.2013		Erstellt von/ prepared by M. Junge		Freigegeben/ approved 20130513084529	
Projektion / projection		ALL DIMENSIONS ARE IN MILLIMETERS		Blechkoechke/ mat. thickness DIN EN ISO 9445-1 0.50	
		Volumen/ volume (mm ³) 260.1		Gewicht/ weight (g) 2.1	
Oberfl./ finish		gewaschen washed			Oberfl. Code/ finish code 6200
Werkstoffbehandl./ material treatment					
Werkstoff/ material X4CrNi18-12 DIN EN 10088-2, Mat.-Nr. 1.4303		Festigkeit / tensile strength 500-650 N/mm ²		Mat. code 2201	
Bezeichnung/ title		Mehrbereichssteckmutter fuer Gewinde M4 sheet metal nut for thread M4			
Teil-Nr./ part no.		015463-0-01		Drawing type C:Customer	
Kundenteile-Nr. / customer part no.		-		Blatt / sheet 1 / 1	
CAD system & version ProE WF4		Dateiname / filename 015463-0C00			

-	-	-
Teil-Nr. / part no.	Oberflaeche / Farbe / finish / colour	Oberfl. Code/ finish code
Ausfuhrung / Execution		