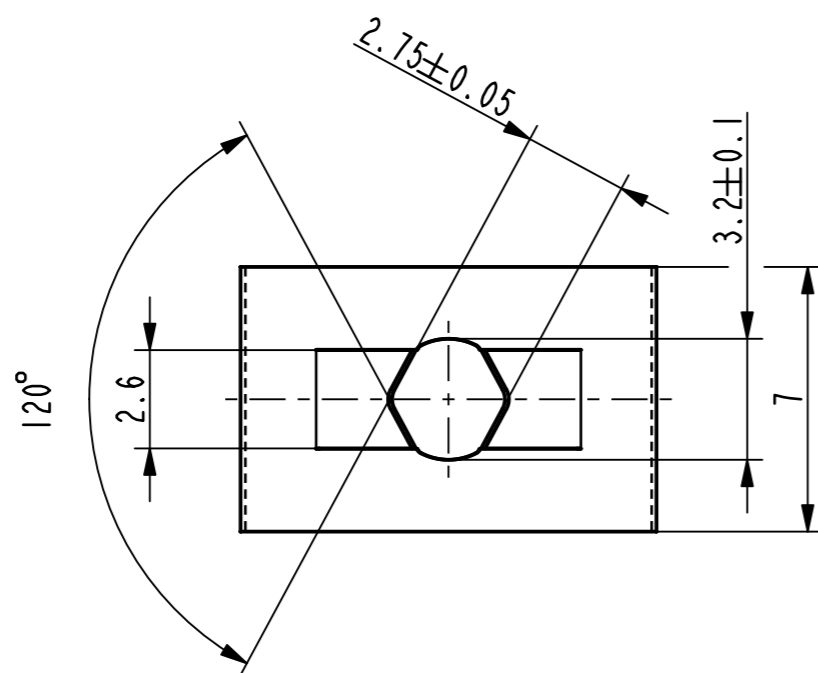
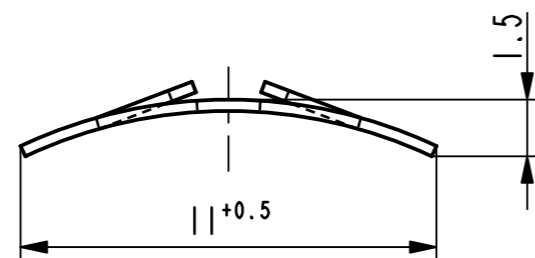




Isometrische Ansicht /  
 isometric view  
 2:1



Vor Auslegung einer automatisierten Verarbeitung des Teils sollte Rucksprache mit Fa. ARaymond gehalten werden.  
 Fully automatic processing of the part requires prior consultation with ARaymond.

-	-	-	-	-
-	-	-	-	-
-	-	-	-	-
-	-	-	-	-
-	-	-	-	-
-	-	-	-	-
-	-	-	-	-
-	-	-	-	-
-	-	-	-	-
-	-	-	-	-

Ca	-	Oberflaechenvariante entfernt (3000)	27.07.11	mj
Rev.	Anzahl/ quantity	Aenderungsbeschreibung / modification description	Datum/date	Name



Teichstrasse 57  
 Germany - 79511 Loerrach  
 Phone +49 (0) 7621 174-0  
 Fax +49 (0) 7621 174-225

Bei Verstaendnisproblemen beantragen Sie bitte beim Absender die deutsche Fassung vor jeder Anwendung.  
**"CONDITIONS OF USE"**  
 This drawing and all information (the "Drawing") disclosed are the exclusive property of ARaymond. By using this Drawing the Addressee acknowledges and accepts that this Drawing (1) is covered by ARaymond's intellectual property rights or know-how and (2) is provided under the following conditions who represent a Deposit Agreement. This Drawing is for Addressee's internal use only limited to its estimation. Without prior written consent of ARaymond, no permission or rights for any purpose, is hereby granted, such as, without any limitation, (1) the copy, in part or entirely, (2) and/or the presentation, in part or entirely, to any other third party outside the Addressee's company or in the company but with no interest (3) and/or the distribution of the Drawing, in part or entirely, in any medium (4) and/or the creation of any derivative work. In case of breach of these conditions, Addressee shall indemnify ARaymond from and against all damages (compensatory or consequential), costs, expenses and charges, caused or arising out of or attributable to its willful misconduct, fraud, negligence, infringement of ARaymond's intellectual property rights. If the Addressee does not accept these conditions, please notify ARaymond's sender immediately.

Intellectual property rights vorbehalten / all rights reserved  
 Classification code EAAB-

Ersatz fuer/  
 substitute for 013730\_c\_01/C/08.09.2005 Entw.Ref./  
 dev.ref. Projekt-Nr./  
 project no.

Masstab/ scale 5:1	Format A3	Allgemeintoleranz/ general tolerance $\pm 0.25 / \pm 3^\circ$	Datum/ date 27.07.2011
Erstellt von/ prepared by M. Junge			

Projektion / projection	ALL DIMENSIONS ARE IN MILLIMETERS	Freigegeben/ approved 20110728045701
Blechkoecke/ mat. thickness DIN EN 10140	0.30	Volumen/ volume (mm <sup>3</sup> ) 21.6 Gewicht/ weight (g) 0.2

Oberfl./  
 finish verzinkt / passiviert farblos  
 zinc plated / passivated colourless  
 Oberfl. Code/  
 finish code 3250

Werkstoffbehandl./  
 material treatment zwischenstufenverguetet / austempered  
 435 ... 535 HV 3

Werkstoff/  
 material C67S DIN EN 10132-4  
 Mat. code 1000

Benennung/  
 title **Federmutter**  
 fuer Bolzen  $\varnothing 3h11$   
**spring nut**  
 for bolt  $\varnothing 3h11$

Teil-Nr./ part no. 013730-0-02	Drawing type C:Customer
-----------------------------------	----------------------------

Kundenteile-Nr. / customer part no. - Blatt / sheet 1 / 1  
 CAD system & version ProE WF4 Dateiname / filename 013730-0C00

-	-	-
Teil-Nr. / part no.	Oberflaeche / Farbe / finish / colour	Oberfl. Code/ finish code
Ausfuehrung / Execution		