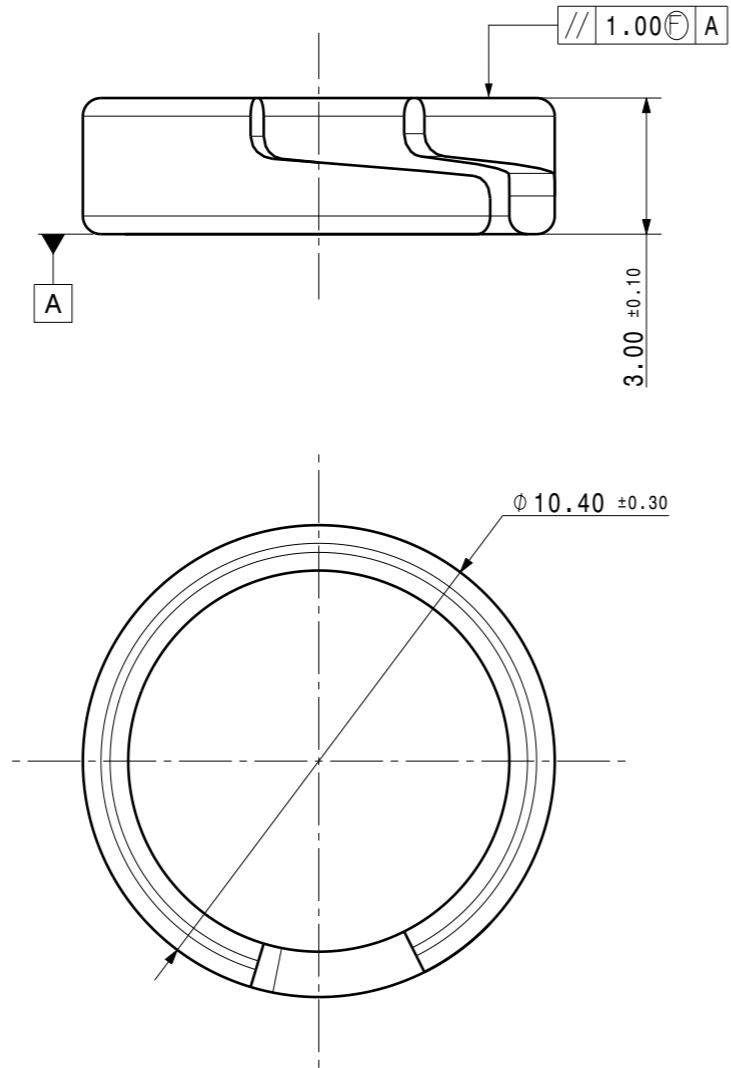


Variant	Matière / Material	Traitement / Material treatments	Finition / Finishes	Poids (g) / Weight (g)
00	C70D	>0,5 : TTH.HR 30 N : 61,3 a 64,7 (42 a 46 HRc) C70D	ZnNi(12-15%Ni)8µ min + Cr3 gris/grey + FOM ProtedurNi75+ Ecotri Gris/grey +Corrosil501 BS RR:720H	0,6
01	C70D	>0,5 : TTH.HR 30 N : 61,3 a 64,7 (42 a 46 HRc) C70D	BRUT DE TREMPE	0,6
03	C70D	>0,5 : TTH.HR 30 N : 61,3 a 64,7 (42 a 46 HRc) C70D	ZnFL Zn-Al + Si 10µ min Magni 3.1 gris/grey BS RR:1000H	0,6
08	C70D	>0,5 : TTH.HR 30 N : 61,3 a 64,7 (42 a 46 HRc) C70D	ZnNi(12-15%Ni)8µ min + Cr3 gris/grey + FOM ProtedurNi75+ Ecotri Gris/grey +Corrosil501 BS RR:720H	0,6



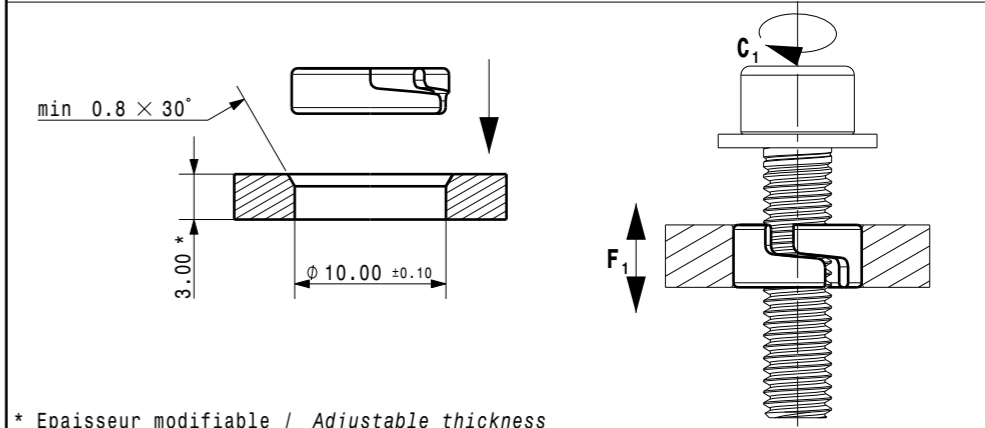
- Logement intérieur bague POUR INFORMATION : $\varnothing 8,00\text{mm} +0/-0,30$
- Couple de serrage admissible C , et tenue sur support F₁ : à valider pour chaque nouvelle application
- Chanfrein d'entrée obligatoire
- Dans le cas d'une distribution automatique et/ou du surmoulage, le process doit être validé par ARaymond

- Ring inner room FOR INFORMATION : $\varnothing 8,00\text{mm} +0/-0,30$
- Admissible tightening torque C , and pull out force F₁ : to be validated for each application
- Introduction chamfer required
- If automatic distribution and/or overmoulding, ARaymond must validate the process



Ah	-	MISE A JOUR CLASSIFICATION CODE	04.11.14	FCA
Ag	-	MISE A JOUR CONDITION D'UTILISATION	08.04.11	QDE
REV.	Quant.	Indice / revision description	Date	Name

Une consultation préalable d'articles est nécessaire avant toute mise en place de la pièce en automatique.
Automatic processing of the part requires prior consultation with A.Raymond SARL.



* Epaisseur modifiable / Adjustable thickness

ARAYMOND **A Raymond**
113 cours Berriat BP 157
France - 38019 Grenoble cedex 1
Tel +33 (0) 4 76 33 49 49
Fax +33 (0) 4 76 78 20 50

Si problème de compréhension, merci de demander la version française à ARaymond avant toute utilisation.
"CONDITIONS OF USE"
This drawing and all information (the "Drawing") disclosed are the exclusive property of A.Raymond. By using this Drawing the Addressee acknowledges and accepts that this Drawing (1) is covered by A.Raymond intellectual property rights or know-how and (2) is provided under the following conditions who represent a Deposit Agreement. This Drawing is for Addressee internal use only limited to its estimation. Without prior written consent of A.Raymond, no permission or rights for any purpose, is hereby granted, such as, without any limitation, (1) the copy, in part or entirely (2) and/or the presentation, in part or entirely, to any other third party outside the Addressee company or in the company but with no interest (3) and/or the distribution of the Drawings, in part or entirely, in any medium (4) and/or the creation of any derivative work. In case of breach of these conditions, Addressee shall indemnify A.Raymond from and against all damages (compensatory or consequential), costs, expenses and charges, caused or arising out of or attributable to its willful misconduct, fraud, negligence, infringement of A.Raymond Intellectual Property rights. If the Addressee does not accept these conditions, please notify A.Raymond sender immediately.

Brevets / Patent rights		Classification code AH-KA	
N° Projet / Project No.	Origine / Origin	Chef de projet / Project Manager DEGELIS	
Echelle / scale 6:1	Format A3	Tolerance / General tolerance Dimension Angle $\pm 0.50 \pm 5.00^\circ$	Date
		ALL DIMENSIONS ARE IN MILLIMETERS	Realise / Prepared by DELAHOUSSE
Epaisseur / Mat. thickness 1,00		Volume (mm³) 74,1	Approuvé / Approved 20150128092822
Finition / finish		Code finition/finish code	

See parts list
Voir tableau

See parts list
Voir tableau

See parts list
Voir tableau

Libelle / Title

Bague anti-fluage RONDE
Anti-creep ring CIRCULAR

Reference / Part no. 202105 - 0 - 00	Drawing type C:Customer
Ref. client / Customer part no.	Planche / Sheet 1/1
CAD system & version CATIA V5 R19 SP9	Nom fichier / File name 202105-0C00

VERIFIER L ECHELLE APRES PHOTOCOPIE / BEWARE SCALE AFTER COPY